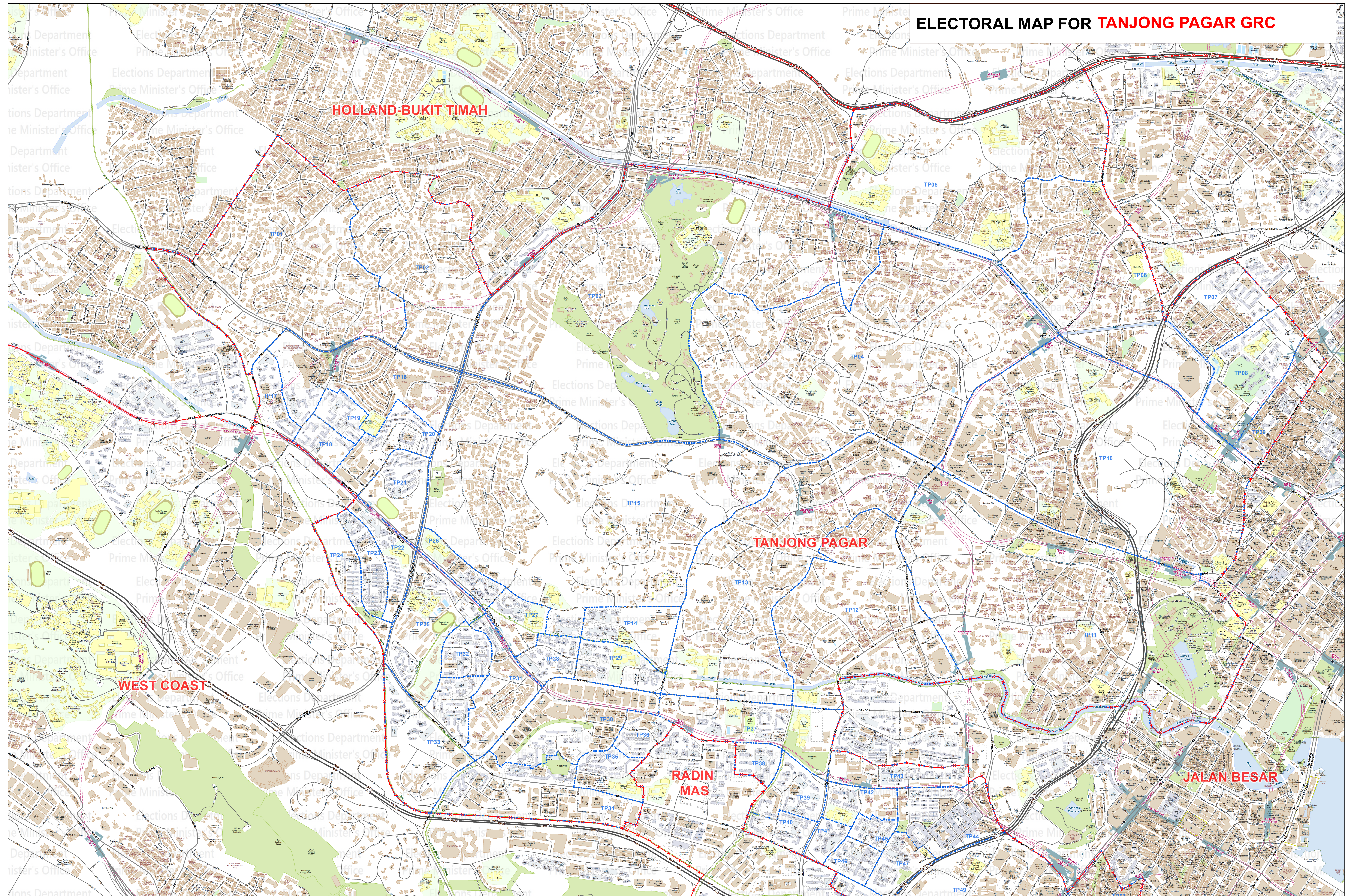


ELECTORAL MAP FOR TANJONG PAGAR GRC



Legend

- HDB Building
- Non-HDB Building
- MRT/LRT Station

ELECTORAL MAP FOR TANJONG PAGAR GRO

ELECTORAL DIVISION -X-X-X-X-X

POLLING DISTRICT - - - - -

SCALE 1:7,500

MAP 1 OF 2

Electorate division and polling district boundaries do not represent the extent of Singapore's territorial waters.
Boundary Data : Updated as at 26 May 2024.
Electorate and Polling District Boundaries : Updated as at 18 June 2024

SLA
SINGAPORE
LAND AUTHORITY

ALL RIGHTS RESERVED

No map may be produced wholly or in part without the written permission of the data supplier(s).
For more information please contact:
Senior Geospatial Manager,
GeoSpatial Systems & Solutions/GeoSpatial & Data
Singapore Land Authority
65 Newton Road, Taxpayer and Business Service Centre
Level 1, Revenue House

ELECTORAL MAP FOR TANJONG PAGAR GRC



RADIN MAS

JALAN BESAR

WEST COAST

ELECTORAL MAP FOR TANJONG PAGAR GRC

ELECTORAL DIVISION -X-X-X-X
POLLING DISTRICT ■■■■ ■■■■ ■■■■ ■■■■ ■■■■ ■■■■
SCALE 1:7,500

MAP 2 OF 2

ALL RIGHTS RESERVED

SLA
SINGAPORE LAND AUTHORITY

No map may be produced wholly or in part without the written permission of the data supplier(s).

For more information please contact:

Senior Geospatial Manager,
Geospatial Systems & Solutions/GeoSpatial & Data
Singapore Land Authority
55 Newton Road, Toplayer and Business Service Centre
Level 1, Revenue House